

Table of Contents

2026 Officers	2
2026 ECIPA Board of Directors	2
2026 ECIPA Technical Officials	2
2026 ECIPA Class Delegates	3
ECIPA General Contest Rules	4
Protest Policy	6
Alcohol & Drug Policy	7
2026 ECIPA Official Weights	8
ECIPA Points System	9
2026 ECIPA Class Payout Information	10
ECIPA Safety Rules & Information	11
ECIPA General Rules	13
☐ Drawbars	13
☐ Clutch/Flywheel	13
☐ Chassis	14
☐ Engine	15
☐ Water	17
☐ Fuel	17
12,000lb Farm Stock Tractors	18
11,000lb/12,000lb Too Hot To Farm Tractors	19
7,700lb 360 Hot Stock Tractors	20
6,250/6,500lb Light Limited Super Stock Tractors	22
8,500lb 466 Limited Pro Stock Tractors	24
9,400lb Super Farm Tractors	25
9,500lb Hot Farm Tractors	27
9,500lb 4.1 Limited Pro Stock Tractors	29
6,000lb Light Limited Modified Tractors	30
8,000lb 2.6 Pro Street Diesel Trucks	32
6,200lb Super Stock 2wd Trucks	34
6,200lb Super Modified 2wd Trucks	35
6,200lb Super Stock 4x4 Trucks	36
6,350lb Modified 4x4 Trucks	38
6,500lb Improved Stock Trucks	40
20,000lb Hot Street Semis	42
4,300lb Mini 2wd Trucks	44
8,000lb 3.0 Limited Pro Stock Diesel Trucks	46

2026 ECIPA Officers

President	Tim Vorwald	563-451-8772
Vice President	Duke Simon	563-495-5920
Secretary/Treasurer	Emily Schemmel	563-451-3859
	Nichole Simon	563-663-2333
Marketing/Social Media	Ryan Sieck	319-361-9665
Sponsorships Director	Nichole Simon	563-663-2333

2026 ECIPA Board of Directors

Dan Heims	3 years Remaining (expires 12/31/2028)	563-608-6566
John Koehn	1 years Remaining (expires 12/31/2026)	641-660-2356
Dave Miller	1 years Remaining (expires 12/31/2026)	563-920-6745
Marty Kuhlmann	2 years Remaining (expires 12/31/2027)	319-961-2127
Darin Hynick	2 years Remaining (expires 12/31/2027)	641-660-7058

ECIPA Tech Officials

Kevin Licht- <i>Head Tech Official</i>	563-886-4742
John Koehn	641-660-2356
Nate Gibbs	319-239-2802
Nick Shirley	563-212-5656
Jason Johnson	319-215-5717
Scott Roshar	319-270-9730
Lance Bistline	319-551-1600
Mark Kilburg	319-975-6162
Duke Simon	563-495-5920
Jim Hoth	563-880-1522
Kendall Coates	563-212-1984
John Issacs	563-880-6889
Darin Hynick	641-660-7058
Tim Vorwald	563-451-8772

2026 Class Delegates

9,500lb 4.1 Limited Pro Stocks	Marty Kuhlmann	319-961-2127
6,200lb Super Modified 2wd	Mitch Wendling	563-608-1016
9,300lb Super Farm	Andy Schuldt	319-269-1482
9,500lb Hot Farm	Brian Steffen	563-663-2537
8,500lb 466 Limited Pro Stocks	Robbie Carrothers	319-540-4389
6,250/6,500lb LLSS	Craig Hol	641-660-7378
11k/12k Too Hot To Farm	Jeremy Reuter	563-590-2616
	Austin Miller	563-608-2330
8,000lb 2.6 Pro Street Diesel Trucks	Nate Weber	608-778-1910
6,200lb Super Stock 2wd Trucks	Larry Boggess	641-330-3068
7,700lb 360 Hot Stocks	Nick Shirley	563-212-5656
13,000lb Farm Stock	Nolan Frahser	563-213-0141
6,500lb Improved Stock Trucks	Jim Siegel	319-284-0781
6,000lb Light Limited Modified	Bryce Stumme	641-229-0174
4,300 Mini 2wd Trucks	Nate Gibbs	319-239-2802



ECIPA General Contest Rules

1. Contestants must pay dues and be a member in good standing before pulling. Contestants ages 16-18 must have written consent of parents or guardians and ECIPA Board of Directors.
2. Pulling vehicles may enter only once in each class.
3. Contest is limited to pneumatic tired pulling vehicles only.
4. **Pulling order to be determined by all competitors drawing a chip from a bag of 250 chips to determine pulling order.**
5. **Any ATV/ UTV/ Pit Vehicle operated in the pits must have proof of insurance provided to an ECI official and receive a sticker to put on the vehicle. Any vehicle without will not be allowed to operate.**
 - **This sticker should be displayed visible on the front window or roll bar. Preferably on the left side of the vehicle.**
6. **At every pull any competitor and pit crew members are required to sign an additional insurance waiver at the sign up trailer.**
7. Each puller is responsible for being lined up and ready to pull when class begins. This includes a helmet and required fire suit on, and strapped in.
 - If not ready to pull within 3 minutes, will result in 5-point loss of points per offense.
8. Each competitor will be allowed two attempts to make a measurable pull.
 - An attempt is defined as moving the sled a measurable distance (one inch or more).
 - On his/her first attempt, if the competitor lets off on the throttle before going 100 feet, said competitor will get a second attempt, even if he went beyond the 100-foot mark.
 - If no attempt is made to back off the throttle, no second attempt will be granted.
 - A. Note: intent is for the driver not to slam on the brakes to stop before the 100- foot mark (or any time) but to come to a smooth, safe stop.
 - B. Cleaning of the track is up to the driver after a false start.
9. The first pulling vehicle has the option of turning down the first hook and immediately re-hooking or hooking in the 6th position or last.
10. A pulling vehicle that does not go 100 feet and stays inbounds will be given a second chance except on pull-offs, where a pulling vehicle has only one attempt, no matter what distance pulled. If a driver has trouble with his pulling vehicle on the first attempt, he may drop to last and has only one attempt. If the sled operator re-sets the sled, the first puller may drop to last.
11. No excessive jerking when starting or during pull.
12. The pulling vehicle pulling the farthest before stopping will be declared the winner of that class. Distance will be measured from the front center of the sled if manual measuring is required.
13. Pull is ended when forward motion stops or if the pulling vehicle goes out of bounds. Excessive digging will not be tolerated.
14. Speed board malfunction for speed limit classes –
 - In the event that the Agronix speed board fails to work due to radio interference, the Radar speedboard will be used.
 - If that board malfunctions during your hook a rehook will be allowed if the issue persists through the class, there will be a class discussion at the end of the class and points will be evenly distributed amongst the competitors for that class.



15. Contest will be governed by a judge or judges with all decision's final. Safety will be the foremost consideration. Dangerous or unfair practices will be the reason for disqualification. Any of the following "A" thru "K" while HOOKED to the sled or under the green flag will be automatic disqualification:
- A. Driver does not remain seated.
 - B. Loss of weights or brackets while still hooked to the sled.
 - C. Loss of any safety equipment or shielding.
 - D. Anything that falls off the pulling vehicle onto the track while hooked to the sled is a disqualification. The only exception to this would be parts that fall onto the track due to INTERNAL ENGINE OR DRIVELINE breakage— this would be internal OR external parts that fall off; but are due to internal engine or driveline failure.
 - Hitch breakage = DQ
 - Wheel/Tire breaking off = DQ
 - Weights falling off = DQ
 - Catastrophic engine failure = Not DQ
 - **Small Cosmetics, Ex. Plastic Hub Cap, Sticker, Nut Cap = Not DQ**
 - E. Anytime the pulling vehicle goes out of bounds.
 - A. Out of bounds ends at 300'.**
 - F. If puller or pulling team member shows unsportsmanlike conduct:
 - A. First offense: Last place points will be awarded to the pulling vehicle for that class, that day.
 - B. Second offense: No points will be awarded.
 - C. Third offense: No points and no money for that day and barred from competition for a year and 1 day.
 - D. Penalty's will be at ECIPA Official's discretion.
 - G. Drivers must wear shirt, shoes, and full-length pants before competing in the pull. Helmet and safety items are required. – SEE SAFETY SECTION
 - H. Severity of punishment is to be at the discretion of the ECIPA Board of Directors. Although a major rules infraction such as illegal entry or flagrant violation of safety rule may cause contestant to be barred from competition for 1 year and 1 day from the date and/or withdrawal of accumulated points.
 - I. Excessive loss of fluids (coolant, motor oil, transmission oil, rear housing oil, water, etc.) while under the green flag
 - J. Driver leaves the seat while in the staging area or at any time the engine is running or is going to be started.
 - A. DRIVER MUST BE SEATED IN/ON VEHICLE WHEN THE ENGINE IS RUNNING AT ALL TIMES!**
 - B. THIS INCLUDES WHILE ON THE SCALE!**
 - K. The ECIPA Board of Directors reserve the rights to change, correct, delete or add any rules that might become necessary during any pulling season.
16. Only one vote per pulling vehicle will be allowed when voting at meetings.
17. All pulling vehicles may be teched at any time at any pull.
18. A floating finish line WILL be used.
19. A pulling vehicle has a three-minute time limit to get hooked to the sled when they are to pull.



- If all else fails, pull starting will be allowed, but must be done in a safe manner.

ECIPA Protest Policy

- 1) All protests must be made in writing and submitted and signed within five (5) minutes of the class being protested completion. All protest fees will be in cash and submitted to the Head Tech Official, ECIPA President, Vice President or Secretary.
 - a. Protest must clearly define three items:
 - i. Who is protested
 - ii. What they are protested for (limited to one item per protest)
 - iii. By who is protesting.
- 2) Hitch height Weight & Tire Protest Fee:
 - a. Protest fee is **\$100.00** in cash.
 - b. A competitive driver may ask the winning pulling vehicle only to re-weigh with a tolerance of 40 lbs. over said class weight for BOTH protestant and protestor. Both vehicles must re-weigh.
 - c. If the protested vehicle is found to be illegal, all prize money for that pull and **points for that pull are lost and the protestor is returned his protest fee.**
 - d. If the protested vehicle is found to be legal, he (the protested vehicle) keeps the protest fee and all prize money, if any is involved.
- 3) Head, Engine, or Injection Pump Protest Fee:
 - a. The protest must be done in writing and signed by the class member that is protesting.
 - i. **To protest engine size, a \$1500 protest fee is required for a pump and/or tear down of the engine.**
 - ii. **Protests that require the removal of the head (check head legality-cubic inch protest) from the engine are \$1500 in cash.**
 - iii. **To protest the injection pump, a \$750 protest fee is required for the tear down of the injection pump.**
 - b. If found legal, the person being protested will receive:
 - i. **Engine/Head Protest: \$1250 and \$250 will go to ECIPA Tech.**
 - ii. **Injection Pump Protest: \$550 and \$200 will go to ECIPA Tech.**
- 4) Any competitor knowingly competing with a performance enhancing equipment verified by a Head Tech Official or refuses to tear engine down at the event will be disqualified for a period of 375 days and including actions discovered by protests, at all ECIPA events.
 - a. **All prize money for that pull and points for that season will be forfeited if found illegal.**
- 5) The officials and the protested are the only people allowed near the vehicle during the protest. Anyone causing disruption during a protest will be disqualified.
- 6) Judge's decisions during the event are final. In order to appeal a tech official's decision, the appealing member shall make a written request and deliver it to the event director or ECIPA Board within 72 hours of the disqualification. The appeal shall be evaluated as promptly as possible. The meeting must allow parties involved the opportunity to personally present their position or facts at the meeting. A majority of the board will constitute a quorum for determination of any appeal and majority of those present will make the decision.



Alcohol and drug use:

- 1) Any person (seen) drinking alcohol or using drugs on event grounds before operating any pulling vehicle:
 - **First offense:** contestant does not compete that day—vehicle can compete with backup driver.
 - **Second offense:** contestant does not compete that day and will get no points for that day. Vehicle can compete with a backup driver.
 - **Third offense:** contestant does not compete that day and loss of points for that season and is barred from competition for a year and 10 days. Vehicle can compete with a backup driver.
 - **Backup** driver(s) must be pre-registered with ECIPA as 2nd driver upon membership sign up. If a backup driver is not signed up with ECIPA as a 2nd driver, they must pay a \$50 entry fee to be a day member to be covered under ECIPA insurance.
 - Any concerns or issues, please notify an ECIPA board member or tech official.



Weights and Scale

- 1) Weight includes driver and all safety equipment, along with ice for the intercooler. Weights must be securely fastened. Weight classes will have “zero” tolerance on weight UNLESS tech officials deem it necessary to change class weight for that event due to scale problems.
 - a. To protest weight, see ‘ECIPA Protest Policy’.
- 2) Hot Street Semis will split weigh when scale capacity is exceeded or when scale is not large enough to accommodate vehicle.
- 3) Official ECIPA Class weights are posted below:

ECIPA 2026 OFFICIAL CLASS WEIGHTS	
TRACTORS	
FS - Farm Stock	12,000lbs
2H2F - Too Hot To Farm	12,000lbs (No Cut Tires)
	11,000lbs (Cut Tires)
360 - 360 Hot Stocks	7,700lbs
LLSS - Light Limited Super Stocks	6,500lbs (Diesel)
	6,400lb (Alcohol w/ 24.5x32” tires)
	6,250lbs (Alcohol/Diesel 30.5x32” tires)
466 - 466 Open	8,500lbs
SF - Super Farm	9,400lbs
HF - Hot Farm	9,500lbs
4.1 - 4.1 Limited Pro Stock	9,500lbs
LPS – Light Pro Stock	9,000lbs
LLM - Light Limited Modified	6,000lbs
TRUCKS	
2WD - Super Stock 2wd Trucks	6,200lbs
MINI - Mini 2wd Trucks	4,300lbs
4x4 - Super Stock 4x4 Trucks	6,200lbs
MOD4x4 - Modified 4x4 Trucks	6,200lbs
D2.6 - 2.6 Diesel Trucks	8,000lbs
D3.0 - 3.0 Limited Pro Stock Diesel Trucks	8,000lbs
SEMI - Hot Street Semis	20,000lbs



POINTS

- 1) Effective 2026 - A class with 2 consecutive years of 4 or less competitors will result in a non points class the following year. It will stay non points until a season of 4 or more competitors on average for a year and the board approves reinstatement.
- 2) A point system will be used with points awarded to all competing members pulling vehicles at all sanctioned events. Pulling vehicles must hook to the sled under its own power and make an attempt to be eligible for points.

Points to be awarded in this manner:

Finish Position	Points Awarded
1st Place	60
2nd Place	58
3rd Place	56
4th Place	54
5th place	52
Less 2 points down through 18th position. 19th and back will receive 26 points each.	

- 3) All members will accumulate points at all events from the date they buy their membership.
- 4) In the result of a tie:
 - a. Points will be split by the tied placings. Example = Tie for 1st place, 60 points + 58 points/2=59 points awarded to both contestants in the tie. Placing money will be divided the same way.
 - b. Does not apply to the Farm Stock & Too Hot To Farm in event of a DQ due to breaking the speed limit.
- 5) Rainout points for all contestants that are at the pull and signed up. Rainout points will be added up and divided among pullers to determine the amount of points to be awarded for each class.
- 6) Any pulling vehicle disqualified will receive 15 hook points.
- 7) **Speed Limit Disqualifications will result in 25 points being awarded to puller(s) breaking the speed limit.**
- 8) Last place money will also be awarded to a pulling vehicle which is forced to scratch out of his/her first weight class due to breakage (money, no points).
- 9) No points for a class will be awarded unless the entire class is completed.
 - a. Points will be evenly distributed to all pullers in the class.
- 10) In the event of a points race tie, the vehicle with the most 1st place finishes will determine the overall points champion. If there is still a tie, the vehicle with the most 2nd place finishes will determine the overall points champion.
- 11) **Failure to sign up prior to 1 hour (60 minutes) before the scheduled start time on the ECIPA schedule will result in a 5-point penalty.**
 - a. **If you are going to be late, you may contact the class delegate or fellow puller to sign up.**
 - b. **There will be no call or texting the secretary.**



2026 ECIPA PAYOUT INFORMATION

All payout money is guaranteed by ECIPA. Checks are mailed out the next day after an event.
Please make sure we have your correct mailing address or notify an ECIPA officer of any address changes.

2026 ECIPA Payout Structure			
Class	2026 Purse	Payout Places	Payout Breakdown
9,500lb 4.1 Limited Pro Stock	\$3,325	6	\$700, \$650, \$600, \$525, \$450, \$400
6,200lb Super Modified 2wd	\$3,000	6	\$625, \$575, \$525, \$475, \$425, \$375
9,500lb Hot Farm	\$2,500	8	\$500, \$425, \$375, \$325, \$275, \$225, \$200, \$175
8,500lb 466 Open	\$2,500	8	\$500, \$425, \$375, \$325, \$275, \$225, \$200, \$175
6,250/6,500lb LLSS	\$2,500	8	\$500, \$425, \$375, \$325, \$275, \$225, \$200, \$175
11K/12Klb Too Hot To Farm	\$1,900	10	\$300, \$275, \$250, \$200, \$175, \$150, \$150, \$150, \$125, \$125
8,000lb 2.6 Diesel Trucks	\$1,600	7	\$350, \$300, \$275, \$250, \$200, \$125, \$100
6,200lb Super Stock 2wd Trucks	\$1,300	6	\$325, \$275, \$225, \$200, \$150, \$125
7,700lb 360 Hot Stock	\$1,600	8	\$270, \$250, \$230, \$210, \$190, \$170, \$150, \$130
13,000lb Farm Stock	\$1,350	8	\$225, \$200, \$190, \$175, \$160, \$150, \$130, \$120
6,500lb Improved Stock Trucks	\$1,100	6	\$250, \$225, \$200, \$175, \$125, \$125
6,000lb Light Limited Modified	\$1,200	6	\$325, \$250, \$225, \$175, \$125, \$100
Non-Points Classes			
9,300lb Super Farm	\$2,000	8	\$425, \$375, \$325, \$275, \$225, \$150, \$125, \$100
4,300lb Mini 2wd	\$800	6	\$200, \$175, \$150, \$125, \$100, \$50
6,350lb Modified 4x4	\$1,200	6	\$400, \$300, \$200, \$150, \$120, \$100
6,200lb Super Stock 4x4	\$1,200	6	\$350, \$275, \$200, \$150, \$120, \$110
8,000lb 3.0 Lim Pro Diesel Trucks	\$1,200	6	\$400, \$300, \$200, \$150, \$120, \$100
20,000lb Hot Street Semis	\$1,200	5	\$275, \$225, \$200, \$175, \$150

**Safety:**

- 1) Helmets must be on in the staging area on deck and remain on until pulling vehicle is unhooked from the sled. Chin straps must be used while wearing the helmet.
- 2) No riders allowed on pulling vehicles in pits – drivers only!
- 3) The kill switch hook-up will be located in the rear center of the tractor. Maximum 6" off center in any direction approximately 3' to 4' above its point of hook. A 2" diameter ring should be made available to the sled.
- 4) All tractors must have a dead man throttle, which automatically retards to idle position when released by the operator, except for Farm Stock.
- 5) Tractors must have a bulkhead shield between driver and engine from top of hood to top of torque tube or transmission housing or clutch housing from side shield to side shield. This also serves as a flash fire shield.
- 6) All tractors in addition to stabilizer bars must have a brace that extends vertically 12" from the rear most tip of skid pads. There must be a support brace extending inward to the frame, axle or top of stabilizer bar arms. Materials used must be of minimum strength of materials used for stabilizer bars. Design and material must withstand a severe impact of the sled. Vertical brace should extend rearward a minimum 2" from radius of rear tires.
- 7) All tractors must be equipped with a starter interrupter switch on the gearshift which will allow starter engagement only in a neutral gearshift position. A clutch pedal safety switch will be allowed as long as the driver is seated while starting the tractor.
- 8) A safety light system is required on all pulling vehicles. A white light, automotive quality, minimum 2" in diameter, must be mounted directly above or below the safety kill switch at the rear of the vehicle. The light must be activated by a shift lever so that when placed in reverse will activate the light.
- 9) Roll cages are mandatory for all classes. NTPA specs are recommended. (NTPA Specs can be provided if needed, please contact a tech official for specs.)
 - a) Rops allowed for speed limit classes- Farm stock and To Hot To Farm

Open Speed Rules Only:

- 10) Must have 2.5 lb. fire extinguisher, preferably halon, must be convenient to the operator.
- 11) All contestants must wear a dot-approved full faced helmet rated at least or must be SFI spec 41.
- 12) No moto-cross helmets allowed. All helmets must be 2000 and newer. No modification or alteration of the helmet is allowed. All chin straps must be fastened. Helmets with flame retardant linings and a flame-retardant neck skirt are allowed. If you use a helmet with both flame-retardant lining and neck skirt, head sock is recommended.
- 13) All contestants must wear fire suits that meet the following requirements:
 - a. Must be a minimum of SFI 3.2A1 driving suit. Drivers who compete in flip top body styles that do not have complete fire walls must wear an SFI 3.2A5 protective clothing.
 - b. All drivers are required to wear full fire protection including full faced helmets with shield, fire gloves, fire shoes and certified SFI fire suits according to body type specifications. **Head sock recommended for all classes.**
 - c. Contestants must wear a 1 or 2-piece fire retardant suit. **MUST BE FULLY ZIPPED UP!**
 - d. All drivers are required to wear a neck brace if their pulling vehicle has a rollcage.
 - All drivers wearing a helmet are required to wear a neck brace, no exceptions.
 - e. Helmets need to be hooked, not to be taken off without unhooking them, if seen a DQ will take place.



- 14) Front skid plate will be required on all tractors.
 - Skid plate must be mounted in line with each frame rail and extend from the center of the front axle forward (on both sides) equal in strength to frame rail material. Skid plate must be securely mounted and braced to the chassis. Skid plate surface to be minimum of 4" wide and 12" long with a minimum 6" curve when measured from the front most part of the rolled edge.
 - **NOTE:** Skid plate must be able to support the weight of the front end when checked with a jack. Maximum ground clearance is bottom of skid plate to the ground, not to exceed 4" with front tires in normal operating position.
- 15) Stabilizer Bars – See General Rules > Chassis > Item #7
- 16) Protection/Guard required to prevent drivers feet from leaving the floorboard/pedal area and coming in contact with rear tires on tractors with cages only.
- 17) Open RPM tractors are required to have a 1/8" steel or 1/4" aluminum inner side shield (blast shield).
- 18) Open RPM trucks and tractors equipped with a turbocharger(s) are required to have an SFI approved blanket covering the turbo.
 - a) Does not apply to the 7,700lb 360 Hot Stock Tractors



ECIPA GENERAL RULES

BRAKES:

- 1) All pulling vehicles must have working brakes.

DRAWBARS:

- 1) Tractor Drawbars:
 - a. Shall be no higher than 20" to the highest point of the hitch. Drawbars must be clamped solid so that it cannot float up-wards or sideways. Drawbars shall be no shorter than 18" from hitch point to center of rear wheel.
 - b. Drawbars shall be constructed so that in the event of drawbar breakage the drawbar supports do not pull from a top link or brace above the centerline of the rear axle. Any vehicle with the drawbar hold-up device above the centerline of the rear wheels must have a single pin slide out drawbar.
 - c. Drawbars cannot be connected to hydraulics or any type of trick hitch.
- 2) Truck Drawbars – See specific truck class for truck drawbar/hitch rules.
- 3) Drawbars and hitch devices shall be constructed of steel.
 - a. 8500# and under classes:
 - i. There must be a minimum 2 sq. inch steel at any point including area of pin with pin removed.
 - ii. Minimum pin size of 7/8".
 - iii. The hitch hole must be 3" wide and 3 3/4" front to back.
 - iv. Hitch must not have more than 1 1/2" sq. or 1 1/2" round stock and hitch shall not be less than 1" sq. or 1 1/8" round stock.
 - b. 8500# and over classes:
 - i. Must be a minimum 2 sq inch steel at any point including area of pin with pin removed.
 - ii. Minimum pin size of 15/16".
 - iii. The hitch hole must be 3" wide and 3 3/4" front to back.
 - iv. Hitch must not have more than 1 1/2" sq. or 1 1/2" round stock and hitch shall not be less than 1" sq. or 1 1/8" round stock.
- 4) No portion of the vehicle may interfere with sled, chain, or hook. Area 6" wide and 12" immediately above the drawbar must be free of all obstruction. This includes weights!
- 5) Drawbars and wheelie bars are not to be connected.
- 6) 2nd hitch must be covered with metal plate
- 7) It is recommended that the competing vehicle not be tied down to tow vehicle on the drawbar in any way.

CLUTCH/FLYWHEEL:

- 1) **All competitors must sign and have on file with ECIPA a notarized Warrant of Clutch, Flywheel & Bellhousing Components form before being allowed to compete at East Central Iowa Pullers Association events during the 2026 season.**
 - a. **Form is available on the ECIPA website and MUST be notarized and mailed into ECIPA.**
- 2) A steel billet flywheel, pressure plate friction surface, and steel floater plates are required for all pulling vehicles. Any vehicle implementing any other type of clutch will be disqualified.
- 3) Safety tie bars mounted to the rear axle housing with at least two axle housing bolts and extending forward of flywheel area and fastened to side of block or main frame with at least two 5/8" bolts; or a one-piece frame extending from front of tractor to rear axle housing mounting



bolts. Note: tie bars or frame must be of sufficient strength to support weight of the tractor with the bolts used to split the tractor removed.

- 4) **All Vehicles Must** have Flywheel guards must be used. A 20-ply ballistic nylon or 20-ply Kevlar 17" wide and long enough to wrap around the bell housing with at least 6" overlap secured with 6-2" wide nylon web straps with steel D-ring and sewn the length of the blanket and secured front and rear with straps.
 - a. **For trucks a certified bell housing meets safety requirements.**
- 5) It is recommended that gasoline and pressurized tanks of flammable substances be kept away from the engine and clutch housing area. This is a suggestion subject to board members and tech official's judgment. Rules may be required later.

CHASSIS:

- 1) The chassis shall consist of the following:
 - a. The stock engine block or its replacement as listed by the manufacturer for that model.
 - b. The stock bell housing or manufacturers replacement.
 - c. The stock transmission housing or manufacturer's replacement.
 - d. The final drive housing or manufacturer's replacement. The original equipment manufacturer engine block or manufacturers' replacement cannot be modified externally in any way except normal repairs. Any alteration to the chassis shell must have written approval of the Association Board. (The criteria of the Board will be retention of stock appearance.) No aluminum replacements of engine parts, clutch housing, transmission case, rear end housing or rear axle housing.
- 2) Tractors must have hood and grill in place as intended by the manufacturer. Tractors must have written Board approval for legal entries of appearance modifications.
- 3) Side shields must be equipped and should be of 60 thousandths steel or aluminum which is to be securely fastened to the tractor. They should cover from top of the frame to the hoods and as long as the engine.
- 4) It is recommended that a quick release fastener be used (winged nut type or cotter pin type hood pins). Reason: ease of access in case of emergency.
- 5) All tractors must have fenders or a shield between the driver and tires to consist of a solid barrier between driver and any part of rear tires sufficient to support weight of driver. Must be a minimum of 36" long at top and must curl a minimum of 6" out over the tire.
- 6) Tractors must have a strong and rigid seat with seat belts anchored to something other than the seat itself. All tip seats should be securely fastened while pulling.
- 7) Stabilizer bars are required. The drawbar assembly must in no way be attached to the stabilizer bars. Stabilizer bar will extend a minimum of 32" behind a line drawn from the center of the wheel to the ground. The stabilizer pad must not be more than 10" off the ground. The stabilizer pad must be a minimum of 5" square. A minimum of 20" will be allowed from the outside of one pad to the other. Stabilizer bars are not to be mounted in any way to the drawbar. Note: the stabilizer bar system must be able to support the weight of the tractor in the heaviest class pulled. Jacking up the pads so the tractor is completely off the ground will be a good test.
 - a. Stabilizer bars are required in all classes except for 4x4 truck and semi classes.
- 8) Vehicle must have a tow hitch on the front of the vehicle. It can extend no more than six (6) inches ahead of the farthest front portion of the vehicle. It will not be counted when measuring the length of the vehicle. It must have a three (3) inch diameter hole, positioned horizontally. It must be strong enough to push, carry or pull the vehicle at its heaviest weight. It is to be used only for pushing, carrying, or pulling the vehicle.



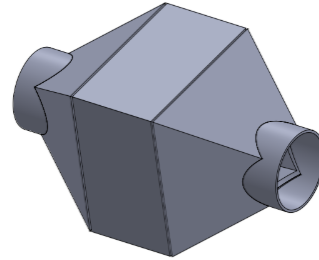
- 9) 4x4 trucks that utilize a weight box for front end weight, it is highly recommended to have a minimum of two 4" wide rollers/wheels under the front weight box.
- 10) Front suspension of any kind is not allowed, must remain factory or rigid in the following ECIPA classes:
 - Farm Stock
 - Too Hot To Farm
 - 360 Hot Stocks

ENGINE:

- 1) Engine must be a manufacturer designed block for that tractor drive line or factory replacement block for that tractor with the factory appearing head for that tractor at the time of manufacture. No aluminum heads allowed.
 - a. John Deere tractors may use any John Deere engine (farm, industrial, gen set, truck, etc.) as long as it meets the cubic inch requirement without de-cubing and is an in-line six-cylinder design with a 12 valve cylinder head and no electronic fuel systems or injectors.
 - b. I-H tractors may use any I-H, Navistar or Case/IH CDC engines (farm, industrial, gen set, truck, etc.) as long as it meets the cubic inch requirement without de-cubing and is an in-line six-cylinder design with 12 valve cylinder heads or a V-8 design with 8 valve cylinder heads and no electronic fuel systems or injectors.
 - c. All other makes and models of tractors may use any age or version of the original OEM engine manufacturers engine product line (farm, industrial, gen set, truck, etc.) as long as it meets the cubic inch requirement without de-cubing and has only 2 valves per cylinder maximum and no electronic fuel systems or injectors. In addition, all other makes (except Deere and IH) may choose to select a newer more modern design engine that replaced the old OEM engine supplier as long as they meet the cubic inch requirement without de-cubing. Examples of this would be Deutz, Cummins, Navistar, Detroit, Sisu, Waukesha, Hercules, Perkins, Caterpillar, Valmet, etc. Only 2 valves per cylinder will be allowed and no electronic controlled fuel systems or injectors.
 - d. Re-cast cylinder heads allowed on ALL engines as long as they are stock appearing when assembled on the engine and are within ¼" dimensionally L-W-H from OEM castings. No aluminum or steel billet cylinder heads allowed (except Deutz aluminum) only cast iron.
- 2) A 1" Max bell housing spacer is allowed
- 3) A 1" Deck Plate is allowed
 - a. Excludes 360 hot stocks, 2 Hot 2 Farm, Farm Stock, and 2.6 Trucks
- 4) P-pumps or any smaller injection pump allowed—only ONE plunger per engine cylinder allowed. No French or Sigma pumps allowed. No electronic injectors or electronic injection pumps or electronic injection systems of ANY kind allowed.
- 5) No pressurized tanks for primary or secondary fuels. There will be the loss of all accumulated points for the year if an illegal pressurized tank is found.
- 6) Turbo charger must be under hood or shrouded end to end and 360 degrees around with .60 steel or heavier. It must be shrouded under a fiberglass hood.
- 7) All Exhaust wheels will be measured at the face of the wheel.
- 8) Exhaust must be discharged vertically, no rain caps or curved pipes allowed.
- 9) Exhaust pipes must have (2) 1/2" grade 8 bolts set within 1" of each other and 90 degrees to each other and must be welded in place nearest to the turbocharger as possible.
 - a. Can use the manufactured cross in place of the 2 - ½" bolts.
 - i. If using manufactured cross, you must have a billet v-band clamp, or have cross welded in place.
 - b. **MANDATORY FOR ALL TURBOCHARGED CLASSES!**

10) Turbo Catcher

- a. One turbo catcher per tractor will be allowed
- b. Only 1 inlet and 1 outlet is allowed
- c. No external liquid or air can flow through
- d. Has to follow specifications laid out below
 - i. 8 ¼" width by 8" height
 - ii. Screen/core/filter max 4 ½" thick
 - iii. Max Length of 15"



- 11) Tractors must have an automatic ignition kill switch and air shutoff in working order at all times. Track officials or tech inspectors have the option of checking kill switches as often as they deem necessary. The switch must be checked with the engine running and track ready. Mechanical fuel shut off is recommended to be a 3-way valve which will send fuel back to the tank when activated for shut down. It is also recommended that this 3-way valve be as close to the injection pump as physically possible for best results. The air shut off must also be able to be activated by the driver from the seat (with seat belts on) AND skid operator.
- a. On a spark engine the kill switch must break or ground ignition and shut off electric pumps.
 - b. On a diesel, the air shut-off must have a spring-loaded closing mechanism. To be deemed acceptable it must prevent building boost. It is recommended that a gasket seal be used. A mechanical shut-off, controlled from the seat, must be placed in the fuel line before the injection pump.
 - c. All engines are required to have two (2) 3/8" cables with a minimum of 4 clamps at the splice or crimps with a coupler on each cable. One cable be placed between the first and second cylinder through the exhaust manifold port area. Second cable around the engine anywhere in the front half of the engine. Both cables circle the entire head /block assembly with a maximum of 4" slack. –
 - d. Computers will be allowed for "Acquisition of Data" only. Computers shall not be used for controlling any mechanical function of the engine or chassis.
- 12) Tractors must have an electric operated cooling fan. Stock steel blade fans that are driven by a belt are not allowed, except for 2 Hot 2 Farm and Farm Stock Tractors.
- a. A .060" thick steel shield or .120" aluminum must run between the frames and under the harmonic balancer to prevent loss of harmonic balancer from the tractor.
- 13) All RPM limited classes: (FS, 2H2F, 360, HF) must have a working RPM sensor! If it does not work your first hook, that will be your warning, but any hook after your first hook that it does not work, it will be a disqualification.
- a. RPM Sensor wire MUST be visible or easily accessed for inspection.
 - b. Must be one continuous wire from sensor to plug.
 - c. Plug must be a molded 110V, 3 prong female electrical outlet.

Water:

- 1) Water for water injection systems may be provided unannounced at any pull by tech officials for all competitors in a class or all classes.
 - a. Water must test less than 5% when tested with a water refractometer. <5% (nD). <5% will be used to allow the use of VP water.
 - b. Water testing above 5% (nD) will result in DQ - no points and no payout. 2nd offense will result in no points and no payout and not allowed to compete for 1 year and 10 days.
 - c. Water must be accessible by valve or in an accessible location for testing, no hidden water lines.
 - d. aichose Brix Refractometer is what is used to test water by ECIPA Officials



Diesel Fuel:

1. Diesel Fuel - Will test 150 across all diesel classes- **Except 360 Hot Stock Tractors**
2. Digatron FT-64 is the fuel tester used by ECIPA Officials
3. ECIPA Tech Officials will perform random "Flash Tests" throughout the season.





ECIPA **12,000LB** FARM STOCK

General Rules:

- L. Farm Stock tractors will weigh **12,000lbs** or less.
- M. Speed limit of 10 mph max will be enforced. 10.1mph is DQ.
- N. PTO is optional.
- O. Must have a rockshaft.
- P. Maximum tire sizes 20.8 x 38 or 18.4 x 42 row crop style tires only. No cut tires of any kind allowed.
- Q. P-Pumps will be allowed. Maximum 13mm plungers.**
- R. Diesel fuel must test 150 or under on ECIPA fuel test
- S. All ECIPA Farm Stock tractors will be of a stock chassis, engine, and frame configuration.
- T. All tractors MUST have a ROPS and tie-bars to compete.**
- U. Wheelie bars and Air Shutoff are mandatory.
- V. Hitch:
 - A. Tractors to follow hitch rules listed under 'ECIPA General Rules - Tractor Drawbars'**
- W. RPM – 3000 RPM maximum, no RPM tolerance or grace allowed, may be hand tached or electronically checked. **All Farm Stock tractors must have a magnetic pickup attached to the front of the engine to measure engine RPM.** The lead wires from the pickup to the rear of the tractor are to be made of 14 or 16 gauge wire, and attached to a 110 volt, 3 prong female electrical outlet. The 2 wires from the pickup need to be attached to the 2 main spades, not the ground spade (round). This pickup cannot be used to supply RPM to a tachometer used on the tractor. Do not supply voltage, or ground to the wires, or the plug. The outlet receptacle needs to be mounted next to the rear mounted air shutoff cable.
- X. All contestants must wear full length pants. No open toed shoes. Contestants must wear shirts.
- Y. In the event of a DQ due to exceeding the 10 mph speed limit, the contestant(s) will be awarded 25 points.**
- Z. **Excessive Speed Penalty- 2 MPH over speed limit**
 - A. 1st Offense - 15 points and \$150 fine**
 - B. 2nd offense- \$150 fine**
 - C. 3rd offense - Banned for 1 year and 10 days**



ECIPA TOO HOT TO FARM RULES

General Rules:

- 1) Too Hot To Farm competing weights are listed below:
 - 12,000lbs with non-cut tires
 - 11,000lbs with cut tires
- 2) All ECIPA Too Hot To Farm tractors will be of a stock chassis, engine and frame configuration. Any deviation from this must get board approval.
- 3) Engine must be 650 CID or less.
- 4) RPM – 3000 RPM maximum, no RPM tolerance or grace allowed. RPMS will be electronically checked. **All Too Hot To Farm tractors must have a magnetic pickup attached to the front of the engine to measure engine RPM.** The lead wires from the pickup to the rear of the tractor are to be made of 14 or 16- gauge wire, and attached to a 110-volt, 3 prong female electrical outlet. The 2 wires from the pickup need to be attached to the 2 main spades, not the ground spade (round). This pickup cannot be used to supply RPM to a tachometer used on the tractor.. The outlet receptacle needs to be mounted next to the rear mounted air shutoff cable.
- 5) Maximum tire sizes 20.8 x 38 or 18.4 x 42 only.
- 6) PTO/HYD. – not required.
- 7) Water Injection into air intake allowed.
- 8) Diesel fuel must test 150 or under on ECIPA fuel test
- 9) **16-mile per hour speed limit enforced. There will be no grace, 16.1mph or over will result in a DQ.** Speed will be policed by a digital radar sign. 16.1 grants you 25 points.
- 10) No weight protruding beyond the rear tires. Hitch must be free and clear and able to reach with hook without excessive work. Sled operator has the right to decline the hook to any tractor regarding this matter.
- 11) Wheelie bars are mandatory and must be the same dimensions as limited pro stock.
- 12) ROPS, side shields & steel flywheels mandatory.
- 13) 9 bolt U-style clamps on hubs prohibited.
- 14) All contestants must wear, seatbelt, full length pants and shirt.

AA.MUST wear a helmet and neck brace if the tractor has a roll cage.

15) Excessive Speed Penalty- 2 MPH over speed limit

- **1st Offense - 15 points and \$150 fine**
- **2nd offense- \$150 fine**
- **3rd offense - Banned for 1 year and 10 days**

- 16) ECIPA reserves the right to make any changes at any time to these rules.
- 17) All other general and contest rules are strictly enforced.

Turbo Rules:

- 1) Add-on turbochargers are allowed and must be shielded with a minimum of .060” thick steel shield the full length of internal rotating assembly.
- 2) Air shut offs are mandatory.



7,700lb 360 HOT STOCKS

General Rules:

- 1) Maximum weight permitted 7,700lbs.
- 2) Maximum cubic inch 370. OEM style cylinder heads using factory style intake in factory location and factory cast exhaust manifolds. Intake piping not to exceed 4" diameter using only one (1) inlet.
 - A. Engine decubing allowed for all engine configurations
 - B. Any engine may be used in any chassis (i.e., IH engine in Deere chassis)
 - C. OEM intake allowed from any manufacturer on any legal engine
 - a. Ex. IH OEM intake on 359 John Deere or 5.9 Cummins
 - D. No deck plates allowed.
 - E. 12 valve heads only, 2 valves per cylinder.
 - F. No aftermarket/ custom runner intakes
- 3) **ECIPA to allow ISP 7,000lb Naturally Aspirated Super Stock tractors to pull**
 - a. **Only gas, open RPM, open cubic inch, naturally aspirated tractors allowed**
 - b. **Tractors must follow all ECIPA safety rules outlined in the ECIPA General Rules. Must run 18.4x38 tires.**
- 4) No intercoolers
- 5) Maximum 7100 P-pump. 13mm maximum plunger size allowed.
- 6) Maximum tire size 18.4X38. Radials allowed.
- 7) Water injection allowed.
- 8) OEM style injectors only.
- 9) 3500 RPM limit, must have tach pickup available at the back of the tractor. No RPM grace, 3501
- 10) RPM's will result in DQ. RPMS will be checked electronically.
- 11) Diesel fuel only as a primary fuel. No pressurized tanks. No LP gas. A fuel dump valve ahead of the injection pump is required.
 - a. **No Fuel Rules**
 - i. **If wet stacking is an issue board can revert to old rule at their discretion - "Diesel fuel must test 150 or under on ECIPA fuel test"**
- 12) Safety equipment required: Engine side sheets, crankshaft pulley/balancer retainer, exhaust pipe cross bars, steel flywheel and pressure plate assembly, clutch housing safety blanket, wheelie bars (must meet ECI Specs), rear wheel fenders, fuel dump valve, dead man throttle, air inlet shut-off snuffer, drivers helmet (DOT approved) and fire jacket and pants, fire extinguisher, seat belt, and mandatory roll cage.
- 13) All tractors must have working rear wheel brakes and wide front axles with safety skis. (See safety ski specs in General Rules listed above.)
- 14) Maximum forward length from the center of rear wheels is 13 feet including front weights and brackets (excluding indoor event lifting rings).
- 15) Drawbars 20-inch max height at hitch point and 18 inches minimum length at hitch point from center of rear wheels and locked solid in ALL directions. Hitch hole 3 1/2" Front to Rear and 3" side to side. Drawbars may not have any supports above the centerline of rear wheels. No part of the tractor must interfere with the sled, chain, or hook.
- 16) All other ECIPA general and contest rules apply and are strictly enforced



Turbo Rules:

- 1) All tractors will be required to have a sealed 2.4" S3 Borg Warner turbocharger. Legal Borg Warner part number is listed below:
 - **No billet wheels and absolutely no modification to any part of the turbo.**



ECIPA LIGHT LIMITED SUPER STOCK TRACTORS

General Rules:

- 1) Light Limited Super Stock Tractors will weigh either of the following:
 - a. 6,250lb maximum weight if running 30.5x32 tires (alcohol or diesel)
 - b. 6,400lb maximum weight if running 24.5x32 tires for alcohol tractors only
 - c. 6,500lb maximum weight if running 24.5x32 tires for diesel tractors only
- 2) Tractor wheelbase will be a maximum of 114" from the center of the rear axle to the center of the front axle.
- 3) All tractors must have a wide front end with front wheels within tracks of rear wheels and safety skis. (See safety ski specs in General Rules listed above.)
- 4) Tractor length of 13 feet maximum from center of rear wheels to the farthest point forward including front weights.
- 5) No chains, duals or 4-wheel drives allowed. Double cut tires are allowed with biased type tires only. Cut and ½ are allowed in biased or radial type tires.
 - a. 30.5" tires allowed on diesel or alcohol powered tractors, must weigh **6,250lbs.**
 - b. 24.5x32" tires allowed. (See Rule #1 above)
 - c. **48 bar maximum with a tire circumference to be maximum of 212" at 5psi and 25" wide**
- 6) Cubic inch restrictions:
 - 410 CID -single charger only
 - 315 CID or less - twin chargers allowed.
 - Maximum of 370 cubic inches (no tolerance) for alcohol tractors.
 - Decubing of an engine is allowed. Engine must match the brand of the tractor. Engine must retain and conform to OEM tractor brand clutch housing, transmission case, and rear end housing being used. An adapter plate of no more than one inch is acceptable but does not diminish the color continuity intent of the decubing rule.
- 7) Tractor may be entered one time only in a given weight.
- 8) Any DIESEL fuel can be used as primary fuel. Gasoline, ether, oxygen, alcohol, nitrous oxide, nitro- methane and propane (or any combination there-of) are all illegal fuels for primary OR secondary fuels. Fuel samples may be taken at events with Tech's discretion.
 - a. Diesel fuel must test 150 or under on ECIPA fuel test
- 9) Water injection systems shall use water or a mixture of water and lubricant only.
- 10) All other ECIPA general and contest rules apply and are strictly enforced.



TURBO RULES:

- 1) Only one turbocharger will be allowed. The only exception are those diesels with 315 CID or less in the LLSS class, may run TWO turbochargers under the guidelines below:
 - 1) The compressor housing will be no larger than a 3" air inlet measured at the smallest diameter area of the compressor wheel. No downsizing of the compressor housing ahead of the wheel will be allowed. Compressor wheel tips 1/8-inch-wide must measure 3-inch diameter or less. Will be Measured with a 3.005" slug. Any slug that touches the appropriate wheels will be illegal.
 - 2) The exhaust housing being no larger than a 4" outlet measured as above. Any slug that touches the appropriate wheels will be illegal. No air bleeds/slots or secondary air allowed in the 6500 lb class. No waste gates or waste gated exhaust housing or no variable vane exhaust. All compressor wheels must have 1/8" tips that measure 3-inch diameter or less. Will be measured with a 4.005" slug. Any slug that touches the appropriate wheels will be illegal.



ECIPA 8,500 466 LIMITED PRO

General Rules:

- 1) Maximum weight permitted 8500#
- 2) Maximum cubic inch 470.
- 3) Cylinder Head –
 - a. Any cast or manufactured cylinder head will be accepted. No billet.
 - b. Cylinder head must retain OEM (Length/Width/Height) for engine application.
 - c. Valves must retain OEM angle for engine application. 2 valves per cylinder maximum.
 - d. Cylinder head must retain OEM bolt pattern for exhaust manifold and intake bolt pattern must be used to attach the exhaust manifold and intake.
 - e. Manifold must bolt 90 degrees to head.
 - f. No overhead cams permitted.
 - g. Bottom of head to top of port: A/C: 2.675 IH: 3.100 JD: 3.250 NH: 3.750
- 4) Aftermarket manifolds permitted. Maximum of 2 valves per cylinder
- 5) No intercoolers
- 6) Maximum 7100 P-pump. Maximum barrel and plunger size 13mm.
- 7) Turbo- Smooth bore 3.00" intake which must protrude into the housing.
- 8) Maximum tire sizes allowed:
 - a. 24.5x32"
 - i. **48 bar maximum with a tire circumference to be maximum of 212" at 5psi and 25" wide**
 - b. 20.8x38"
 - c. 18.4x42"
 - d. Radials allowed.

Fuel:

- 1) Diesel fuel only as a primary fuel. No pressurized tanks. No LP gas. A fuel dump valve ahead of the injection pump is required.
- 2) Diesel fuel must test 150 or under on ECIPA fuel test



ECIPA SUPER FARM

For 2026 this is a Non Points Championship Class

General Rules:

- 1) Super Farm Tractors weight:
 - a. 9,400lbs maximum if tractor is following [ECIPA/NTPA Super Farm rules](#).
 - b. 9,200lbs maximum if tractor is following [PPL Super Farm Rules](#).
 - c. 9,000lbs maximum if tractor is following [Outlaw Super Farm Rules](#).
 - d. **MUST FOLLOW OUTLAW/PPL/NTPA RULES TO PULL AT ABOVE WEIGHTS.**
- 2) Tractor wheelbase will be a maximum of 114" from the center of the rear axle to the center of the front axle.
- 3) All tractors must have a wide front end with front wheels within tracks of rear wheels and safety skis. (See safety ski specs in General Rules listed above.)
- 4) Tractor length of 13 feet maximum from center of rear wheels to the farthest point forward including front weights.
- 5) Tire size limit is 24.5x32.
 - BB. All 24.5x32 will have a maximum circumference of 212" at 5 psi and 25" wide**
 - CC. No chains, duals or 4-wheel drives allowed. Double cut tires are allowed with biased type tires only. Cut and ½ are allowed in biased or radial type tires.
- 6) Cubic inch restrictions:
 - a. 650 CID
 - b. 430 CID or less - twin chargers allowed.
- 7) Tractor may be entered one time only in a given weight.
- 8) Any DIESEL fuel can be used as primary fuel. Gasoline, ether, oxygen, alcohol, nitrous oxide, nitro- methane and propane (or any combination there-of) are all illegal fuels for primary OR secondary fuels. Fuel samples may be taken at events with Tech's discretion.
 - A. Diesel fuel must test 150 or under on ECIPA fuel test
- 9) Water injection systems shall use water or a mixture of water and lubricant only.
- 10) Water for water injection systems and/or diesel fuel may be provided unannounced at any pull by tech officials for all competitors in a class or all classes.
 - a. Water must test less than 5 when tested with a water refractometer. <5 (nD). <5 will be used to allow the use of VP water.
 - b. Water testing above 5 (nD) will result in DQ- no points and no payout. 2nd offense will result in no points and no payout and not allowed to compete for 1 year and 10 days.
 - c. Water must be accessible by valve or in an accessible location for testing, no hidden water lines.
- 11) All other ECIPA general and contest rules apply and are strictly enforced.



Turbo Rules:

- 1) Only one turbocharger will be allowed. The only exception are those diesels with 430 CID or less in the 9400-pound SF classes, may run two turbo- chargers under the guidelines below:
 - a. The 9400 lb Super Farm class may run:
 - One slotted 3"X3".
 - One smooth 3"X4".
 - Twin turbo-charged 9300 lb LPS tractors can run the same size/type turbo as the single turbo 650 CID tractors. All compressor wheels must have 1/8" tips that measure 3-inch diameter or less.
 - **Tractors running under Outlaw rules must run the Outlaw spec turbocharger listed in the [2025 OTTPA Rule Book](#).**
 - **Tractors running under Pro Pulling League rules must follow the [2025 PPL Super Farm Rules](#).**
 - b. The compressor housing will be no larger than a 3" air inlet measured at the smallest diameter area of the compressor wheel face. No downsizing of the compressor housing ahead of the wheel will be allowed. Compressor wheel tips 1/8-inch-wide must measure 3-inch diameter or less. Inlet will be measured with a 3.005" slug. Any slug that touches the appropriate wheels will be illegal.
 - c. The exhaust housing being no larger than a 3" (Slotted) or 4" (Smooth) outlet measured at the smallest diameter area of the exhaust wheel face.. Any slug that touches the appropriate wheels will be illegal. No waste gates or waste gated exhaust housing or no variable vane exhaust. Exhaust wheel tips 1/8-inch-wide must measure 3-inch diameter or less. Any slug that touches the appropriate wheels will be illegal.



ECIPA 9,500LB HOT FARM TRACTORS

General Rules:

- 1) Hot Farm tractors will weigh 9500 pounds maximum.
- 2) Engine:
 - a) 466 cubic inches maximum engine size with intercooler.
 - b) 640 maximum cubic inches allowed with no intercoolers of any kind.
- 3) 3000 RPM maximum, no RPM tolerance or grace allowed, and will be electronically checked. **All Hot Farm tractors MUST have a magnetic pickup attached to the front of the engine to measure engine RPM.** The lead wires from the pickup to the rear of the tractor are to be made of 14 or 16- gauge wire, and attached to a 110-volt, 3 prong female electrical outlet. The 2 wires from the pickup need to be attached to the 2 main spades, not the ground spade (round). This pickup cannot be used to supply RPM to a tachometer used on the tractor. Do not supply voltage, or ground to the wires, or the plug. The outlet receptacle needs to be mounted next to the rear mounted air shutoff cable. **3000 RPM max, 3001 RPM will result in DQ.**
- 4) No de-cubing of engine size allowed unless approved by ECIPA Board. Any non-OEM farm engine/farm chassis combination must have ECIPA Board approval.
- 5) Tire size limits: 20.8 x 38 or 18.4 x 42. Any cut allowed. Radial tires allowed.
- 6) Water injection into the air intake allowed. Nothing may be added to the water except soluble oil for lube. Tech officials may at any time drain tanks and furnish water injection solution for a given class or event. No combustion enhancers or oxygenates allowed. Nitrous oxide is not allowed. LP gas injection is not allowed.
- 7) Diesel fuel only as a primary fuel. No pressurized tanks. No LP gas. A fuel dump valve ahead of the injection pump is required. Tech officials may at any time drain tanks and provide diesel fuel for a given class or take fuel samples at any event without notice.
 - a) **Diesel fuel must test 150 or under on ECIPA fuel test**
- 8) Safety equipment required: Engine side sheets, crankshaft pulley/balancer retainer, exhaust pipe cross bars, steel flywheel and pressure plate assembly, clutch housing safety blanket, wheelie bars (must meet ECI LimPro Specs), rear wheel fenders, fuel dump valve, dead man throttle, air inlet shut- off snuffer, drivers' helmet (DOT approved) and fire jacket and pants, fire extinguisher, seat belt, and mandatory roll cage.
- 9) All tractors must have working rear wheel brakes and wide front axles with safety skis. (See safety ski specs in General Rules listed above.)
- 10) Maximum forward length from the center of rear wheels is 13 feet including front weights and brackets (excluding indoor event lifting rings).
- 11) Drawbars 20-inch max height at hitch point and 18 inches minimum length at hitch point from center of rear wheels and locked solid in ALL directions. Hitch hole 3 1/2" Front to Rear and 3" side to side. Drawbars may not have any supports above the centerline of rear wheels. No part of the tractor must interfere with the sled, chain, or hook.
- 12) All other ECIPA general and contest rules apply and are strictly enforced.



Turbo Rules:

- 1) Sizes allowed
 - a) 3" x 3" slotted
 - b) 3" x 4" smooth
- 2) The compressor housing will be no larger than a 3" air inlet measured at the smallest diameter area of the compressor wheel face. No downsizing of the compressor housing ahead of the wheel will be allowed. Compressor wheel tips 1/8-inch-wide must measure 3-inch diameter or less. Any slug that touches the appropriate wheels will be illegal.
- 3) The exhaust housing will be no larger than a 3" (Slotted) or 4" (Smooth) outlet measured at the smallest diameter area of the exhaust wheel face . No downsizing of the compressor housing ahead of the wheel will be allowed. Compressor wheel tips 1/8-inch-wide must measure 3-inch diameter or less. Any slug that touches the appropriate wheels will be illegal.

ECIPA 9,500LB 4.1 LIMITED PRO STOCK TRACTORS

General Rules:

- 1) Maximum weight permitted is 9500lbs.
 - a. 4.1 Limited Pro Stock Tractors may weigh a maximum of 9,500lbs.



- b. 540 Light Pro Stock Tractors may weigh a maximum 9,000lbs.
- 2) Maximum cubic inch limit is 640. Maximum of 8 cylinders permitted.
- 3) The only acceptable fuel is diesel.
 - a. **Diesel fuel must test 150 or under on ECIPA fuel test**
- 4) No air cooling devices in any manner permitted.
- 5) Maximum size injection pump is a 7100 series pump allowed (2 5/8" W x 9 9/16" L x 8 3/16" H main pump body), only one plunger per cylinder.
- 6) Component chassis are not acceptable.
- 7) No overhead cams permitted. Outside of the cylinder head must keep OEM length and width dimensions. Valves must retain OEM angle. (Manifold bolt pattern dimensions must retain stock dimensions). Maximum of 2 valves per cylinder.
- 8) Aftermarket manifolds are allowed and must bolt in the original port bolt pattern.
- 9) Deck plates are allowed with a maximum thickness of 1.00".
- 10) Maximum tire size is 24.5" X 32".
 - a. All 24.5x32 will have a maximum circumference of 212" at 5 psi and 25" wide.

Turbo Rules:

- 1) The turbocharger is smooth-faced intake housing, limited to a 4.1" inlet, (no map ring) with all air entering through the 4.1" opening. Intake wheel must protrude 1/8th inch inside of the opening.
- 2) All exhaust will exit through a 4.5" opening in the exhaust housing. Exhaust wheel must protrude 1/8th inch inside of the opening.
- 3) No waste gates permitted.

ECIPA 6,000LB LIGHT LIMITED MODIFIED TRACTORS

LLM TRACTORS WILL FOLLOW CURRENT OUTLAW 6,000LB LLM RULES

- 1) Weight is 6000 lbs no tolerance unless noted otherwise.



- 2) Allowable fuels, alcohol, diesel, kerosene, any form of gas/race gas, absolutely no nitro methane or nitrous oxide allowed.
- 3) EFI is allowed on any engine combination listed below.
- 4) Maximum of one 650 ci billet automotive style engine hemi heads allowed with maximum blower size of 14-71 no overdrive limit, no screw blowers allowed.
- 5) One methanol fuel injected Allison v12 aircraft engine limited to 8.8-1 supercharger overdrive ratio.
- 6) One carbureted gas Allison v12 aircraft engine limited to 9.6-1 supercharger overdrive ratio.
- 7) One carbureted gas Merlin or Packard style v12.
- 8) Any combination of N/A wedge head automotive style engines with a combined displacement of 1500 ci.
 - a) Under 750 ci will be allowed to run at 7000 lbs.
- 9) Any combination of forced induction wedge head automotive style engine with combined displacement of 750 ci, no billet blocks or heads allowed.
 - a) Turbos limited to one per bank, non-staged.
 - b) Aluminum heads- 76mm inducer compressor side, 76mm exducer turbine side.
 - c) Types of engine driven blowers allowed are centrifugal and roots. No overdrive limit, no variable
 - d) speed device, No screw blowers.
 - e) No intercoolers allowed.
 - f) Under 375 ci will be allowed to run at 7000 lbs.
- 10) One Ag or industrial style engine limited to 505 ci displacement on alcohol and unlimited displacement on diesel.
 - a) Aftermarket aluminum heads allowed no overhead cams or hemi style combustion chambers.
 - b) Turbo is limited to 4.1" smooth bore with maximum 4.5" exhaust wheel, intake and exhaust wheel must protrude 1/8" into housing, no map width enhancement (MWE) allowed, exhaust must exit through max 4.5" bore in housing.
- 11) Turbines
 - a) One Lycoming T53 L-13 turbine with water injection at 6200 lbs.
 - b) Twin Lycoming T53 L-1, L-11 without water injection.
 - c) All turbines must be operated within military specifications.
 - d) Single T53 L-1, L-11 will be allowed to run at 7000 lbs
 - e) One Lycoming T55-L5 Rated at 2200hp military spec. Must be sealed at an authorized repair shop. No water or alcohol injection allowed.
- 12) Any combination of automotive style diesel engines i.e Duramax, Cummins, Powerstroke. Limited to 900 ci displacement, may run one turbo per engine limited to 76mm inducer compressor side and 88mm exducer turbine side. Intake and exhaust wheel must protrude 1/8" into housing No intercoolers, Water injection is allowed.
 - a) Under 450 ci will be allowed to run at 7000 lbs
- 13) One 1100 ci Ford GAA engine on alcohol limited to two non-staged turbo chargers, one per bank. 88mm inducer compressor 99mm exducer turbine side. Intake and exhaust wheel must protrude 1/8" into housing



1/25/2026

East Central Iowa Pullers Association

- 14) Allow one small block ag engine on alcohol with 4.1in smooth bore inducer compressor side and 4.5in turbo exducer turbine side. Intake and Exhaust wheel must protrude 1/8in into housing. No Map Groove. Exhaust must exit through 4.5in housing. Not to exceed 460 ci. Overhead cam cylinder head allowed.
- 15) Automotive Single Engine 750 ci max. Cast aluminum or iron wedge head. No billet. Conventional only. No Big Chief. No Hemi Heads.
 - A. 2 non staged 88mm turbo inducer compressor side and 99mm turbo exducer side.
 - B. 1 non staged 4.1in smooth bore inducer compressor side and 4.5in turbo exducer side. Intake and exhaust wheel must protrude 1/8 in into housing. No Map groove. Exhaust must exit through 4.5 in housing.

ECIPA 8,000LB PRO STREET 2.6 DIESEL TRUCKS

General Rules:



- 1) Maximum weight 8000 lbs.
- 2) OEM Chassis is mandatory. The vehicle must retain the full OEM chassis. Wheel tubs, back half conversions, and tube chassis are prohibited. Must retain factory OEM wheelbase for make and model of body, not to exceed 172 inches.
- 3) The body must be an OEM truck body including the full bed floor. No flatbeds permitted. The body must retain the full sheet metal. Aftermarket hoods permitted. The hood must be closed and securely latched when hooked to sled.
 - a) Will allow for fiberglass front end or tilt body
- 4) Complete engine must have stock appearance except where otherwise noted in these rules. Maximum engine size will be 460ci. Engine must be in the OEM location for the body used. Engine must have a 3/8 diameter cable surrounding the engine block. Cable is to be positioned between #1 and #2 cylinders and is to pass through manifolds. Cable will have 4-6 inches of slack. Two cable clamps at cable splice are required.
- 5) Cylinder head must be an OEM or OEM replica for the brand of engine. Outside of the cylinder head must measure factory width and length. No billet heads of any material. Heads must retain factory OEM valve angle. No deck plates permitted.
- 6) Hook point to be no closer than 44" of centerline of rear axle. Maximum hitch height of 24" with a minimum of 3.75"x3" opening. Hitch must be stationary in all directions. Hitch must be frame mounted. The use of Reese style hitches is prohibited. Hitch must be the centerline of the rear axle or behind. Hitch must not exceed 25-degree angle from pivot point to hook point. No hitch supports or adjusters fastened to rear axle housing shall be above the center point of rear axle. Pivot pin of the drawbar can be no further forward than the centerline of the rear axle.
- 7) Turbo is limited to a 2.6" inducer bore. Bore must be smooth. No MAP Width Enhancement groove (MWE) allowed. Compressor wheel must protrude into 2.6" bore for 1/8". Bore will be checked with a 2.605" turbo plug. Plug must not be able to enter the inducer bore and contact wheel.
- 8) Water injection is prohibited.
- 9) Air to Air intercooler only. No cooling device of any kind allowed for an intercooler. No ice boxes.
- 10) All vehicles must be equipped with upward pointing exhaust. Two 3/8-inch diameter bolts must be placed through the exhaust pipe in a cross pattern within one inch of each other and within 12 inches of the turbo.
- 11) Front hanging weights are allowed, not to exceed 60 inches forward from the centerline of the front axle. Ballast may be added in the bed of the truck but must be securely fastened.
- 12) All trucks must have at least a six-inch-wide u-joint shield around the rear u-joint constructed of at least 5/16-inch steel or 3/8 aluminum that will safely contain the u-joint and the end of the driveshaft. All shields must be securely mounted to the vehicle. Any front shaft u-joints that can be visibly seen from the side of the truck must be shielded to contain the u-joint and the end of the driveshaft.
- 13) A fire extinguisher system is permitted. 2.5# fire extinguisher must be securely mounted within reach of the driver. A complete OEM firewall is required.
- 14) All drivers must have a valid driver license and wear a SFI fire jacket, including helmet. Seat Belt/restraint must be worn.
- 15) The complete OEM floor pan is mandatory. Vehicle must maintain a complete firewall. Additional gauges and pillar pods are permitted.
- 16) Hand throttles permitted.
- 17) Diesel fuel only. No propane or N02 or any other oxygen enhancers allowed.
 - a) Diesel fuel must test 150 or under on ECIPA fuel test



- 18) Maximum of one P pump up to P7100 allowed. 13MM plunger limit. Ag governors permitted. The use of multiple HPOP's or high-pressure common rail fuel pumps is legal. Pumps must be factory supplied pumps from 1 ton and under diesel truck engine.
- 19) **Drive train will consist of the following:**
 - a) **Any front axle, any transfer case, and any rear axle. No planetaries permitted.**
- 20) Axle shields are required. Shield to be .060" thickness steel or aluminum. A hole may be cut in one shield to allow operation of hub lock.
- 21) Safety switches (rain cap or guillotine) must shut off air to diesel engines. Switch will be securely mounted to the back of the vehicle. A 2 inch or bigger solid ring must be attached to the end of the switch. Ring must be zip tied to the switch bracket. Switch must also be able to be activated in the cab while the driver is secured in the vehicle.
- 22) Hydraulic steering permitted.
- 23) Suspension - The upper mounting point for strut assembly must be in factory location. Adjustable caster/camber pillow ball mounts are permitted. The lower control arm may be strengthened provided the factory mounting points are maintained. Strut tower braces, lower tie bars, sway bars, and limit straps are permitted. Traction bars and devices are permitted. Raising or lowering of vehicle height with suspension modifications is permitted but must be bolt on only. Welds permitted for attachment to frame and axle only. Blocked suspension permitted. No air bags. Rear suspension may be made solid.
- 24) Tires must be DOT approved with a maximum size of 35x12.50. No studded tires or tire chains. No alterations to tires permitted. No bar or terra tires.
- 25) Dual wheels are prohibited.
- 26) SFI bell housing and/or SFI blow proof bell housing or SFI blanket type shield must be used.



General Rules:

- 1) **ECIPA to follow 2026 Fantasy Truck Pullers Rules.**
- 2) Maximum weight permitted is 6,200lbs.
- 3) Must be factory type production pickup. Must contain factory type engine in factory (stock) location but no less than 14" from center of front axle to bell housing mounting surface on block.
- 4) Stock type frame rails must be used from center of front axle to center of rear axle.
- 5) No T-buckets
- 6) Must have brakes, and front and rear glass or Plexiglas. Vehicle may not be stripped beyond safe operating conditions-- hood, fenders, doors, glass, and brakes. Vehicle cab must have a full metal floor of steel or aluminum. Openings & covers allowed for transmission, clutch pedal, brake pedals etc.
- 7) No fiberglass bodies. Fiberglass hoods will be allowed.
- 8) Engine limit - 485 C. I. limit (5 C.I. leeway). Naturally aspirated engine only.
- 9) Headers allowed. Any commercially available cast single carb intake allowed. No tunnel rams. Maximum height of manifold with adapter and/or spacers cannot exceed 11 inches as measured from bottom of carburetor base down to block end rails. 4500 manifold allowed.
- 10) Any single carburetor allowed, no extended carburetors or EFI
- 11) No aluminum heads and or blocks. Aftermarket cast iron heads allowed. Valve angles must be within 3 degrees of stock OEM cast iron heads.
- 12) No dry sump. No external oil pump.
- 13) No magnetos.
- 14) All safety equipment required - loops, scatter shield, and kill switches. All kill switches must shut off ignition and fuel pumps.
- 15) Any single aftermarket 3 speed manual transmission allowed. No air shifter, no reverser. If running an automatic transmission, one drop box is allowed.
- 16) One single speed or 2 speed rear axle allowed. The only planetaries allowed are those in 2 speed rear axles. Rear axle covers required.
- 17) Can have a weight bracket on front. Weight may not exceed 180" from the center of the rear axle to the furthest point forward.
- 18) Hitch height 30". Hitches must be rigid in all directions. Draw bar length to be minimum of 27% of truck wheelbase from center of rear axle to point of hook; and have a clear hook. Maximum wheelbase 133".
- 19) Must be DOT approved tires. Maximum tire size 35" x 12.5" or LT315-75R16. No dual wheels allowed.
- 20) No alterations to tread allowed. Ciped tires allowed.
- 21) Kill switch must be located in the rear center of the vehicle (maximum of 6 inches left or right of center, maximum of 24 inches above the point of hook). Must be a 2" steel ring.
- 22) Driver safety equipment required as specified in general rules.

6,200lb Super Modified 2wd Trucks



General Rules:

- 1) Maximum weight of competition vehicle is 6200#.
- 2) Maximum wheelbase on all trucks is 165 inches regardless of body type. Air or hydraulic devices to raise or lower the front of the chassis is prohibited.
- 3) The 15 feet from center of axle overall rule will apply to all TWD trucks with the exception of a 10" inch over length allowance for cosmetic fiberglass only. No steel structure, reinforcement, or steel bumpers allowed past 15 feet.
- 4) Maximum width of vehicle is 96"
- 5) Any automotive type engine, with only two valves per cylinder and must accept a stock automotive crankshaft. Maximum cubic inch limit 575.
- 6) Maximum supercharger limit is 14-71 hi-helix. No screw type superchargers permitted.
- 7) Maximum bore spacing is 5.00"
- 8) All burst panels must face away from the driver.
- 9) Electronic control devices or programmable boxes for ignition timing are prohibited.
- 10) Any mass-produced truck style body produced after 1936 may be used, all other bodies will be subject to a 200# weight reduction at nationally sanctioned events. See ECIPA Tech Committee for approval.
- 11) Fiberglass bodies are allowed.
- 12) Truck beds must be covered during competition.
- 13) Grills, hoods, and fenders must be in place as intended by the manufacturer.
- 14) Clear or factory tinted windows must be in place.
- 15) Only 1/4" Lexan, .060 steel, or 3/16 aluminum are the only materials allowed for firewalls. No plexiglass firewalls permitted.
- 16) All vehicles must have vertical bumpers. Bumpers must extend minimum 8" vertically. Bottom of bumper to be a maximum of 24" from the ground.
- 17) No fuel tanks, fuel lines, pressure gauges or pumps allowed in cabs. All hydraulic lines in the cab must be shielded top and sides with a minimum of .060 aluminum.
- 18) Non-planetary rear ends must run axle covers.
- 19) Weights cannot extend more than 12 inches from the drawbar.
- 20) Top adjuster drawbar bolt to accommodate zip tie to a rigid bracket.
- 21) Drawbar top adjuster to accommodate a zip-tie for attachment to rigid brackets.



Non Points Class

General Rules:

- 1) 6,200lb maximum weight
- 2) Must be a factory production vehicle.
- 3) Vehicle may not be stripped beyond safe operating conditions - hood, fenders, and doors required.
 - DD. If there is no floor in the box, the rear wheels must be covered with bed liner or tonneau cover.
- 4) No tube frames – Must run stock pickup frame.
- 5) Maximum wheelbase 133”.
- 6) All safety equipment required - loops, scatter shield, rear axle covers, kill switch.
 - a. All kill switches must shut off ignition and fuel pumps. No modifications to bell housing in line of flywheel.
 - b. Kill switch must be located in the rear center of the vehicle (maximum of 6 inches left or right of center, maximum of 24 inches above the point of hook).

Engine:

- 1) Truck and engine must be of the same manufacturer. Engine must be in stock location, or no less than 14” from the center of the front axle to the front of the bell housing. Engine limit - 530 C.I. limit (5 C.I. leeway).
- 2) Fuel pressure gauge must be mounted outside of the truck cab. No nitrous oxide, alcohol, or pressurized fuel allowed.
- 3) Headers allowed. Any ignition permitted.
- 4) Any camshaft, single carb, or intake manifold can be used. Must be of stock configurations - tunnel rams, pro rams, etc. are not permitted. No sheet metal intakes. No blowers or hemi heads allowed. Engines must be naturally aspirated. Aluminum heads allowed.
- 5) Heads that are not allowed: Pontiac Big Chief, Olds Big Chief, Dart Big Chief, Brodix Big Duke, Ford C460, Ford E460 or Blue Thunder Thor. No pro stock heads allowed. No hemi heads. Chevy, Dodges run any Siamese cylinder head, Fords can run Trickflow A460 or Blue Thunder heads. No EX514 cast or aluminum or eliminator heads allowed.
- 6) No 5" bore space engines or heads.
- 7) No aluminum blocks allowed.

Drivetrain/Suspension/Hitch:

- 1) Any driveline component spinning at engine speed or faster must be totally enclosed.
- 2) Weight added to the vehicle must be securely fastened. Weight may not exceed 60” from the center of the front axle.
- 3) Hitch must be rigid in all directions with a maximum hitch height of 26”. Draw bar to be a minimum of 27% of truck wheelbase from center of rear axle to point of hook and have a clear point of hook with a minimum of 3.75”X 3.0” opening. If the drawbar height adjuster is fastened to the rear differential it must be attached to the center of the axle or below. Pin to hook straight line no more than 25 degrees.



1/25/2026

East Central Iowa Pullers Association

- 4) Maximum tire size 35x12.50/15, 16, or 16.5" tire. Maximum 10" rim - inside bead to bead. No dual wheels. Must be a DOT approved tire. Cyped tires allowed. If wheel tread is offset, the center line of front tires must run within the tread of rear tires.
- 5) Drive train will consist of the following: Any front axle, any transfer case, and any rear axle. No planetaries permitted.
- 6) Dual shocks, solid suspension, blocks, and traction bars allowed. Any automotive type spring may be used. Any combination of the above is allowed on the front or rear axle.
- 7) Plummer suspension is not allowed. Must have factory, functional, front suspension.
- 8) Must have push bars 36" or below. No lower than 24" solid construction.

ECIPA 6,350lb Modified 4x4 Trucks



Non Points Class

Rules will follow PPL Rules

General Rules:

- 1) Maximum weight of competition vehicle is 6350 lbs.
- 2) No cubic inch limit.
- 3) Any automotive type engine, must be naturally aspirated, with only two valves per cylinder and must accept a stock automotive crankshaft.
- 4) Rear of engine block can be no farther forward than the centerline of the front axle.
- 5) Maximum bore spacing allowed is 5.00".
- 6) Engine must be behind grill.
- 7) No digital, microprocessor, computer, or programmable ignition controls. No traction control ignition accessories. No six shooter, power grid systems or similar type ignition controls. (Starter saver allowed)

Chassis:

- 1) Front weights may not extend more than 60 inches from centerline of front axle. No loose weights allowed in cab or under hood allowed. Front weight boxes will be rigid and have a minimum of 8" of ground clearance for staging and competition.
- 2) Truck or van bodies permitted and must have complete firewall.
- 3) Planetary axles are permitted.
- 4) Tube frames are permitted.
- 5) Axle shields are required. Shield to be .060" thickness steel or aluminum. Shield not to be mounted to axle ends or hub bolts. A single hole may be cut in one to allow locking in of hubs.
- 6) Maximum wheelbase is 133 inches on all Modified 4X4 trucks. Wheels must be centered in wheel wells. Body must be lengthened or shortened between cab and rear wheel wells, to maintain rear wheels centered in rear wheel well.
- 7) Maximum tire size to be 112 inch circumference, when inflated to 30 psi with original bar, not to exceed 18 inches in width before cutting.
- 8) Front tow hitch will be strong enough to push, pull or pick the vehicle up. Only a 6x6 piece of steel with a minimum thickness of 1" and a maximum of 1.25" thickness will be allowed. A round three (3) inch hole is required in front tow hitch.
- 9) Clear plexiglass or factory tint glass permitted.
- 10) No mud flaps or dirt deflectors will be permitted.
- 11) No fuel tanks, fuel lines, pressure gauges or pumps allowed in cabs. All hydraulic lines in cab must be shielded top and sides with a minimum of .060 aluminum.
- 12) All air or hydraulic suspension systems cannot have hydraulic, air, or electric lines attached to these devices during competition.



Hitch:

- 1) Hitch height maximum is to be 26" at point of hook before, during, and after pull. Hitch must be rigid in all directions and solidly mounted. Pulling point can be no more than 1" inch from back edge of drawbar. No clevis, chains, or cables permitted in hitching device. From point of hook to centerline of rear axle shall be no less than 30% of truck wheelbase and shall not slope any greater than 25° to hitch point.
- 2) No hitch supports or adjusters, if fastened to the rear axle housing shall be above the centerline of the rear axle. Pivot pin of the drawbar can be no farther forward than the centerline of the rear axle.
- 3) Bumper Bars. A minimum 8 in vertical bumper bar be placed in line with each frame rail so the bottom of the bar is a maximum of 18 in. from the ground and located beyond the furthest most part of the body structure. Bumper bars must be braced forward to frame at both top and bottom (no "T" type bars). Bumper bar assembly including braces must be min. 1 1/2" x .095" wall steel tubing (square or round). Bumper bars must be securely attached to prevent collapsing on impact.

Front Safety Wheels:

- 1) All FWD vehicles must use (2) wheels no more than 6 inches off the ground, within 6 inches of the forward most part of the vehicle.
- 2) Wheels must be a minimum of 6 inches in diameter by 4 inches wide.
- 3) Wheels must support the weight of the vehicle.
- 4) Wheels must be raised or removed for the purpose of ground clearance when the vehicle is not on competition track.
- 5) Wheels must be at least 3 feet apart.



ECIPA 6,500LB IMPROVED STOCK TRUCKS

Weight:

- 1) Improved Stock Trucks will compete at 6,500lbs.

Body & Frame:

- 1) Body and frame must be of O.E. manufacturer. I.E. Ford body on Ford frame, GM body on GM frame,
- 2) Dodge body on Dodge frame and so on.
 - a. Factory frame with stock wheelbase no tube or custom-made frames
- 3) Must be a steel, full bodied truck, unless factory equipped with non- steel body panels from the factory and must match make, model and year of truck. NOTE: Tilt nose or removable front clips are not allowed.
- 4) Vehicle must not be stripped beyond safe operating condition (hood, fenders, fender liners, and doors).
- 5) Factory box must have a floor-to-cover drivetrain. Must have the original factory firewall between driver and engine. Must have front, rear and side glass, no Plexiglass. Racing seats allowed with 5 point harness. Headlights, taillights, and reverse lights must be functional.
- 6) Flatbeds are allowed but must be deemed usable by ECIPA officials.
- 7) Front bumper must be in stock location and of O.E. design and unaltered.
- 8) Front weight bracket allowed. Hanging weights only. On a 133" wheelbase, weight must be 60" (max) from the center of the front axle. Wheelbase trucks over 133" cannot have front hanging weights.
- 9) The Hitch must be in stock location behind the factory frame. Reese-style hitch must be at factory bumper location.
- 10) 26" maximum hitch height. Adjustable hitches allowed. No custom pulling hitches.

Drivetrain:

- 1) Maximum size 33x12.50 or 305 DOT tires. DOT rims only (no aluminum hubs or Real Racing rims). No siping or cutting. No duals.
- 2) 1-ton drivetrain (maximum), 8 bolt wheels (maximum), no bus rear-ends or F106 or equivalent. No aftermarket hydraulic steering.
 - a. Drive train must be OEM, no drop boxes, stock style trans and T-case.
- 3) Bolt-on traction bars and blocks suspension allowed. If blocks are removed, suspension must be able to travel. If welded solid, the suspension must have leaf springs attached for weight purposes.
- 4) Four corner brakes must work.
- 5) Driveshaft loops and u-joint shields required (1/4" thick steel or 3/8" thick aluminum).
- 6) Must have after-market steel SFI flywheel and bell housings or transmission blanket for automatics.

Engine:

- 1) Engine must match body (Chevy-to-Chevy only, no Ford-to-Chevy swaps)
- 2) Engine block and heads must be OEM cast iron only and in factory position.



- a) No cubic inch limit
- 3) Single 850 CFM max carb; 4150 carb flange (no Dominator style carbs.) One-inch carb spacer is allowed.
- 4) Factory style fuel injection allowed but must be correct to make, model and year of truck.
- 5) No more than 12 inches of 3/8 inch rubber fuel line. All fuel lines must be braided or metal enclosed. No fuel logs.
- 6) Single fuel pumps only, mechanical, or electric allowed.
 - a) Race fuel allowed. No nitrous, methanol, turbos or (super) chargers. E-85 allowed.
- 7) Dual plane intakes only. Cannot be sheet metal intakes.
- 8) Headers are allowed to run down and backward inside or outside of the frame; both must have mufflers exiting behind the cab.
- 9) Aluminum Heads Allowed- With Small Block Only
 - a) Fantasy Rules
- 10) No aftermarket vacuum pumps or dry sump oiling.
- 11) Hand throttles allowed.
- 12) Kill switches are required and must kill ignition and fuel pump (if electric).

Safety:

- 1) All ECIPA General Safety Rules will apply.



ECIPA 6,500LB IMPROVED STOCK TRUCKS

Weight:

- 1) Improved Stock Trucks will compete at 6,500lbs.

Body & Frame:

- 1) Body and frame must be of O.E. manufacturer. I.E. Ford body on Ford frame, GM body on GM frame,
- 2) Dodge body on Dodge frame and so on.
 - a. Factory frame with stock wheelbase no tube or custom-made frames
- 3) Must be a steel, full bodied truck, unless factory equipped with non- steel body panels from the factory and must match make, model and year of truck. NOTE: Tilt nose or removable front clips are not allowed.
- 4) Vehicle must not be stripped beyond safe operating condition (hood, fenders, fender liners, and doors).
- 5) Factory box must have a floor-to-cover drivetrain. Must have the original factory firewall between driver and engine. Must have front, rear and side glass, no Plexiglass. Racing seats allowed with 5 point harness. Headlights, taillights, and reverse lights must be functional.
- 6) Flatbeds are allowed but must be deemed usable by ECIPA officials.
- 7) Front bumper must be in stock location and of O.E. design and unaltered.
- 8) Front weight bracket allowed. Hanging weights only. On a 133" wheelbase, weight must be 60" (max) from the center of the front axle. Wheelbase trucks over 133" cannot have front hanging weights.
- 9) The Hitch must be in stock location behind the factory frame. Reese-style hitch must be at factory bumper location.
- 10) 26" maximum hitch height. Adjustable hitches allowed. No custom pulling hitches.

Drivetrain:

- 1) Maximum size 33x12.50 or 305 DOT tires. DOT rims only (no aluminum hubs or Real Racing rims). No siping or cutting. No duals.
- 2) 1-ton drivetrain (maximum), 8 bolt wheels (maximum), no bus rear-ends or F106 or equivalent. No aftermarket hydraulic steering.
 - a. Drive train must be OEM, no drop boxes, stock style trans and T-case.
- 3) Bolt-on traction bars and blocks suspension allowed. If blocks are removed, suspension must be able to travel. If welded solid, the suspension must have leaf springs attached for weight purposes.
- 4) Four corner brakes must work.
- 5) Driveshaft loops and u-joint shields required (1/4" thick steel or 3/8" thick aluminum).
- 6) Must have after-market steel SFI flywheel and bell housings or transmission blanket for automatics.

Engine:

- 1) Engine must match body (Chevy-to-Chevy only, no Ford-to-Chevy swaps)
- 2) Engine block and heads must be OEM cast iron only and in factory position.



- a) No cubic inch limit
- 3) Single 850 CFM max carb; 4150 carb flange (no Dominator style carbs.) One-inch carb spacer is allowed.
- 4) Factory style fuel injection allowed but must be correct to make, model and year of truck.
- 5) No more than 12 inches of 3/8 inch rubber fuel line. All fuel lines must be braided or metal enclosed. No fuel logs.
- 6) Single fuel pumps only, mechanical, or electric allowed.
 - a) Race fuel allowed. No nitrous, methanol, turbos or (super) chargers. E-85 allowed.
- 7) Dual plane intakes only. Cannot be sheet metal intakes.
- 8) Headers are allowed to run down and backward inside or outside of the frame; both must have mufflers exiting behind the cab.
- 9) Aluminum Heads Allowed- With Small Block Only
 - a) Fantasy Rules
- 10) No aftermarket vacuum pumps or dry sump oiling.
- 11) Hand throttles allowed.
- 12) Kill switches are required and must kill ignition and fuel pump (if electric).

Safety:

- 1) All ECIPA General Safety Rules will apply.



ECIPA 20,000LB HOT STREET SEMIS

Non Points Class

General Rules:

- 1) Required Safety: Guillotine air kill (In the cab and rear of truck recommended), battery disconnect switch, fire extinguisher within reach of driver.
- 2) All drivers **MUST** wear a full fire suit, including gloves, shoes and neck brace.
 - a. Helmet sock recommended
- 3) **NO RIDERS ALLOWED.**
- 4) Diesel Fuel only.
 - a. Diesel fuel must test 150 or under on ECIPA fuel test
- 5) Tires: Must have DOT approved tires, no cutting of tires permitted. Maximum width 10 inches.
- 6) Hanging weights allowed but must not extend past hitch.
 - a. All competitors must weigh at every pull. If scale does not support 20,000lbs, a split weight method will be used. *

Engine:

- 1) Engine must be a make a model that was commercially available in a class 8 truck.
- 2) Cylinder block and heads must be OEM castings and will operate with the stock crankshaft with maximum cubic inch limit set at OEM stock CI for engine with a 1% variance allowed for wear.

Fuel Injection:

- 1) ECM must be factory with factory connections. All ECM controls from the factory. Cummins engines must have Cummins ECM, CAT must have CAT ECM, Detroit must have Detroit ECM, etc.
- 2) No Sigma or Billet pumps permitted.
- 3) No Traction control.
- 4) **No RPM limit, but must have all safety equipment as other Open RPM classes as specified in the general rules.**

Turbo:

- 1) A single turbo charger is permitted with a maximum intake wheel inducer bore size of 4.100" if utilizing an intercooler. Turbo size will be checked using a 4.105" slug. Turbo cannot be bushed down from a larger size. No oval shaped inducer bores. Compressor wheel must extend into the inducer bore and cover the map groove. Factory style map width enhancement groove is permitted; maximum .280", no other means for air to the compressor wheel are permitted. No slots or grooves that face completely forward from the intake wheel out.
 - a. Any truck with a turbocharger larger than 4.100" must run with an 18" hitch.
 - b. Any truck with a 4.100" turbocharger and an intercooler must run with a 20" hitch.
- 2) Twin chargers allowed only in stock size and configuration. No aftermarket/larger turbochargers allowed on a twin turbocharger setup.



Water injection:

- 1) Water injection is permitted. No ether, alcohol, nitrous or other combustible (propellant) liquid or combustible material may be injected into the turbocharger or any part of the air intake system.

Hitch:

- 1) 20" maximum hitch height with suspension blocked and chained. Suspension will not be able to extend past 20"
- 2) 18" maximum hitch height for NTPA/PPL trucks

Suspension:

- 1) All Trucks in the hot street class must be equipped with chains or some type of limiting device on the rear drive axle to prevent the height of the frame from changing during the pull. Limiting device on the rear axle must not have any 'give' built in. Solid rear drive axle suspension is allowed. Chains or limiting devices on the rear axle must be tight (no slack) when the hitch is measured and must be visible.
- 2) Any adding or subtracting air from the air bags or doing anything, resulting in an INCREASE OF HITCH HEIGHT, while the truck is hooked to the weight transfer machine, will result in disqualification. It must be understood that OEM air suspensions automatically add and subtract air to compensate for load, but ride height remains CONSTANT!
- 3) The height of the hitch must remain the same from start to finish. Adding air to the front is legal on air ride suspension. Airbags or air springs and/or all mechanical lift mechanisms on front steering axles are NOT permitted.



ECIPA 4,300lb Mini 2wd Trucks

Non Points Class

General Rules:

- 1) 4,300 lbs maximum with driver and co-driver.
- 2) Tow hook with 3-3/4" opening minimum. May exceed in front of weight box and will not be counted as the 153" maximum length.
- 3) All trucks must be compact style mini truck, S10, Ranger, D50, Comanche, Dakota, Colorado, Blazer etc. Any brand of engine allowed in any truck body with full factory frame.
- 4) Factory frame only. May be reinforced front to back. No adding to the length of the frame.
- 5) Maximum wheelbase 109-1/4" Maximum length 153 inches measured from the center of the rear axle to the front of the weights.
- 6) Rear weights must either be inside of bed or drop below bed floor.
- 7) DOT tires only. Unaltered tread pattern. Maximum tire size 33x12.50. Pullers specific tire brand and rim size combination must be used for reference.
- 8) Maximum rim width 10 inches.
- 9) Factory OEM body, any OEM or aftermarket hood. Air cleaner must be covered by hood scoop or enclosure.
- 10) Firewall must remain in original position (can be cut for clearance).
- 11) Driver's seat must remain in original stock location.
- 12) Battery may be mounted anywhere, except inside the cab.
- 13) Top of bed must be covered if bed is cut out.
- 14) All factory OEM glass. No Lexan or Plexiglass.
- 15) Racing gasoline or pump gas, E85 (+/-), Methanol (alcohol) is the only acceptable fuel. No combustion enhancers of any kind allowed in any fuel. Oxygenates are ok. If running alcohol exhaust must be run vertically.
- 16) Fuel cell can be mounted in front of truck but cannot exceed 153" maximum length from rear axle.
- 17) Stabilizer bars required. The bars must extend behind the rear tire and be a maximum of 10 inches off the ground with a 5-inch square pad. NO rolling wheels or moving devices of any kind on stabilizer bars.
- 18) Safety belts are required and must be worn during competition. OEM or 4-point harness minimum.
- 19) Firewall and cab floor must have all unused holes patched or plugged.
- 20) Shields around u-joints and drive-line every three feet; 6" long shield thickness 3/8" aluminum, 5/16" steel. Vehicles must have drive-shaft loops every three feet. All vehicles must have universal joint covers (360 degrees) 6" long centered on joint.
- 21) Sled bumpers may extend past the hitch or body. These are recommended but not required.

Hitch Rules:

- 1) Hitch distance 39-1/4 inches minimum measured from the center of the rear axle to the hook point. Hitch must be stationary in all directions.
- 2) Maximum hitch height is 26 inches with the driver in the seat.
- 3) Drawbar must be straight from the anchor point to the hook point.
- 4) Hitch anchor point can be no higher than 36 inches off the ground.
 - a. Anchor pinhole will be 7/8" minimum.



Engine Rules:

- 1) Engine block shall be "small block" configurations only.
 - a. OEM production blocks only and must have OEM casting numbers.
 - b. No Bowtie, FRPP/Ford Motorsports, Direct Connection, or other aftermarket allowed.
 - c. 366 cubic inch maximum displacement. No tolerance.
- 2) MSD 6AL analog or digital with Rev Limiter required.
 - a. Unit may be mounted in the cab on passenger side firewall with rev limit chip facing up. Unit must not be reachable by driver buckled in.
- 3) Camshafts must be solid or hydraulic flat tappet. No roller camshafts allowed. No roller lifters.
- 4) OEM or aftermarket Cast Iron Cylinder heads with factory valve cover angel, port location, and intake manifold bolt pattern allowed. No Aluminum.
- 5) Cast iron or cast aluminum intake manifolds only.
- 6) One (1) four-barrel natural aspirated carburetor, 4150 style, Square flange 850 CFM maximum, with factory part number on choke housing.
- 7) Numbers must not be altered.
- 8) All air must enter through the Ventura.
- 9) Carburetor "Go – No- Go" tool must not extend below factory casting ring in non-modified venture.
- 10) Tool must not enter bottom base plate.
- 11) All other alterations acceptable.
- 12) Engine exhaust must exit vertically or downward and straight back.

Transmission Rules:

- 1) OEM Transmission. No cut gears. Multiple transmissions allowed.
- 2) Manuals must run steel flywheel, steel bell housing, and block saver plate. Double disk clutch maximum. No centripetal clutches. No Glide type clutches. No Crower clutches. Pedal style clutches only.
- 3) Automatic must have a SFI Shield or SFI blanket around the torque converter and planetary.
- 4) One ton rear differential maximum.



ECIPA 8000LB LIMITED PRO STOCK 3.0 DIESEL TRUCK RULES

Non Points Class

Body/Chassis:

- 1) The body must be the OEM truck body. The body must retain full sheet metal, aftermarket hoods are permitted. The hood must be closed and securely latched while the vehicle is hooked to the sled.
- 2) The OEM chassis is mandatory. The engine must be in the OEM location for the body used. The vehicle must retain the full OEM chassis. Wheel tubs, back-half conversions, tube chassis, etc. are prohibited.
- 3) The complete OEM firewall is mandatory.
- 4) If the factory floor pan is removed, all driveshafts to be totally enclosed in 3/8" aluminum or 5/16" steel, only 1/4" of shaft may be visible.
- 5) If there is no floor in the box, rear wheels must be covered with bed liner or tonneau cover.

Drawbar/Hitch:

- 1) Hook point must be no closer than 44 inches of centerline of rear axle.
- 2) Hitch height maximum of 26 inches with a minimum of 3.75-inch-long by 3-inch-wide opening.
- 3) Hitch point must be easily accessed, no trick type hitches permitted.
- 4) Hitches must be stationary in all directions and must be frame mounted.
- 5) Hitch must be mounted centerline of the rear axle or behind.
- 6) Hitch must not exceed a maximum of 25-degree angle from pivot point to hook point.

Wheels/Weights:

- EE. 7,500 minimum weight – 8,000 lbs. maximum weight.
- FF. Ballast is permitted. Front hanging weights are allowed, not to exceed 60 inches forward of the center of the front axle. This will be measured from the center of the front wheels to the end of weight assembly. Ballast may be added to the bed of the truck.
- GG. The tires must be DOT street tires. Maximum size of a 35 inch 12.50 or metric equivalent allowed. Cut tires are prohibited. 102-inch maximum outside tire to outside tire. Rear duals are allowed.
- HH. Wheelbase: Maximum wheelbase if 158 inches. Rear dual wheels allowed.

Transmission/Driveline:

- 1) Drive train will consist of the following: Any front axle, any transfer case, and any rear axle. No planetaries permitted.
- 2) All trucks must have at least six-inch-wide u-joint shields around the rear u-joint constructed of at least ¼ inch steel or a 3/8-inch aluminum that will safely contain the u-joint and the end of the rear shaft. All shields must be securely mounted to the vehicle. Any front shaft u-joint that is visible from the side of the truck must be shielded to contain the u-joint and the end of the shaft. Recommend that all u-joints be covered, and drive shafts have the 3 additional hanger loops as specified in the truck general rules.



Engine:

- 1) The engine is limited to a stock appearing engine, which can be interchanged between Dodge, Ford, Chevy, etc. as long as they came in a one ton or smaller pickup from the factory. Complete engine must have stock appearance except where otherwise noted in these rules. Aftermarket intake manifolds are allowed.
- 2) Radiators must be in the stock location and be at least stock size.
- 3) Turbocharger: Up to a 3-inch slick bore without map ring. The compressor wheel must protrude into the 3.0 bore for 1/8 inch. The inlet must be measured using a 3.005-inch plug. The plug must not be able to enter the inducer bore. All provisions allowing the air into the wheel other than via bore and MWE groove are prohibited. The vehicle driver will be responsible for making the compressor wheel accessible for tech personnel to measure bore, and to inspect the compressor wheel. No removable plugs or reducers allowed to reduce to legal spec.
- 4) Water Injection: Water injection is prohibited. All water injection system components must be removed from the truck.
- 5) Intercoolers: Ice water intercoolers are allowed.
- 6) Exhaust: All vehicles must be equipped to direct exhaust upward. Two 3/8-inch diameter bolts must be placed through the exhaust pipe in a cross pattern one inch of each other, within 12 inches of the turbo.
- 7) Fire Extinguisher System: A fire extinguisher system is permitted.

Fuel & Water:

- 1) Fuel Injection Pump is limited to a stock appearing, OEM engine model specific pump only. The use of multiple high pressure common rail fuel pumps is legal. Power stroke engines with a single factory turbo may utilize a second HPOP. Pumps from different years in the same engine model may be interchanged. P7100 pumps are allowed to run RSV (ag governors).
- 2) Diesel fuel must test 150 or under on ECIPA fuel test
- 3) Racing fuel cells are permitted.

Steering and Suspension:

- 1) Steering: The vehicle must retain the full, original OEM steering gear. The vehicle must retain the original OEM power assistance, if so equipped. Additional stabilizers and hydraulic steering are permitted.
- 2) Suspension, Front: Adjustable caster/camber pillow ball mounts are permitted. The lower control arm may be strengthened provided factory mounting points to chassis are maintained. The lower mounting point for the strut assembly may be modified for improved caster or camber. Strut tower braces, lower tie bars, sway bars, and limited straps are permitted. Traction bars and devices are permitted. Final decisions rest with the tech officials.
- 3) Suspension, Rear: Lowering or raising the vehicle height with suspension modifications is permitted. Traction bars and devices are permitted. Sway bars, limit straps and camber kits are permitted. Blocked suspension is permitted.